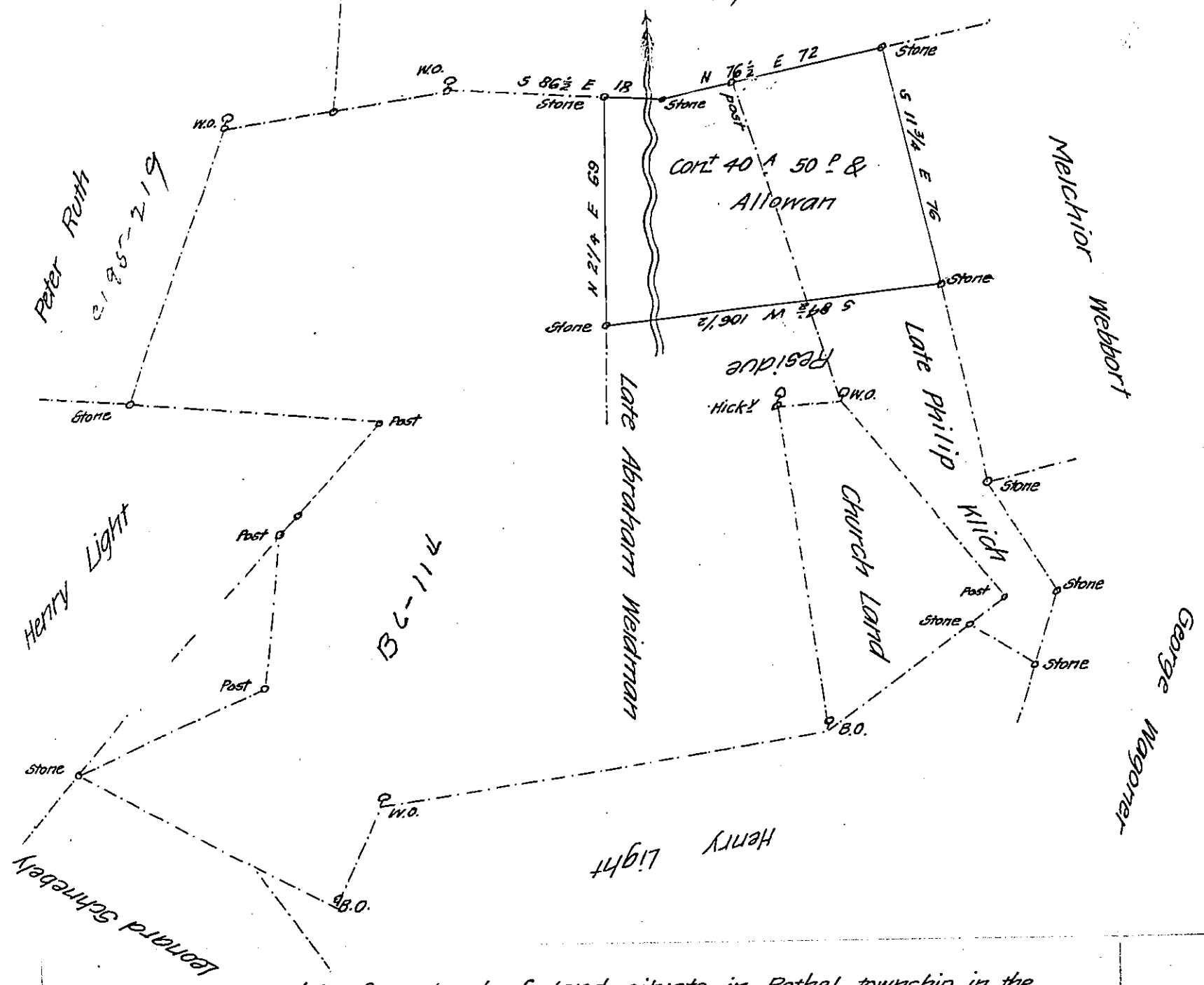


FORM NO 1.

Henry Danner  
C 122-291



A draught of a tract of land situate in Bethel township in the County of Lebanon containing forty Acres and fifty perches and the Usual Allowance of six per Cent &c. (It being part of two larger tracts of land lying contiguous to each other surveyed in pursuance of two warrants, one thereof bearing date the 5<sup>th</sup> day of June 1761 containing two hundred and twenty-eight Acres & One hundred & twelve perches & Allowance &c. granted to Abraham Weidman and the other bearing date the 27<sup>th</sup> day of July 1772 containing forty-two Acres and a half and the usual Allowance granted to Philip Klick.) Surveyed the 24<sup>th</sup> day of November 1837 for Henry Klick

Ezekiel Cherington D.S.

To John Taylor Esq<sup>r</sup>

Surveyor General of Penn<sup>a</sup>

IN TESTIMONY that the above is a copy of the original remaining on file in the Department of Internal Affairs of Pennsylvania, made conformably to an Act of Assembly approved the 16th day of February, 1833, I have hereunto set my Hand and caused the Seal of said Department to be affixed at Harrisburg, this twenty sixth day of August 1907

*Henry Howell*  
Secretary of Internal Affairs.